

# Center for Social and Economic Strategies



Prof. Martin Potůček

# CESES: Overview

- established in October 2000
- research center within the Faculty of Social Sciences at Charles University, Prague
- develops theories, methodologies and practices of future research
- identifies and analyzes key issues, developmental barriers and development opportunities for the Czech Republic



# Czech Republic: Overview

- **Location:** geographical center of Europe
- **Area:** 78.886 sq.km
- **Capital:** Prague
- **GDP per capita 2001:** 5.500 USD (15.300 in PPP)
- **Population:** 10.304.302
- **Population density:** 131 inhabitants/sq. km
- **Political system:** Parliamentary democracy
- **Currency:** Czech crown (CZK)



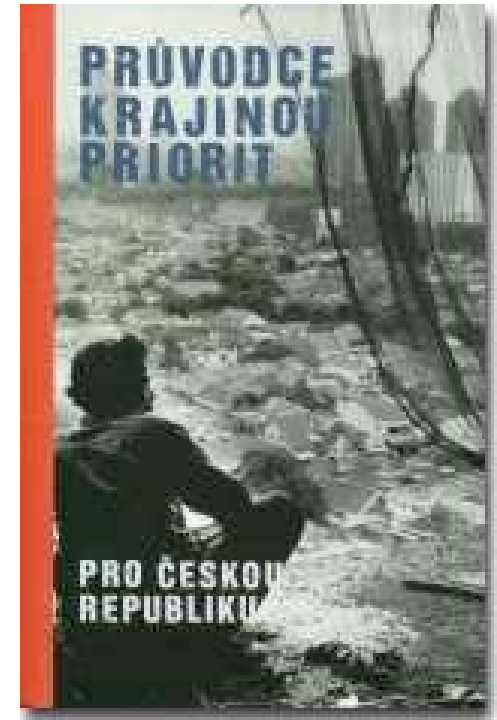
# Visions for the Development of the Czech Republic to the Year 2015

- the first publication (2001)
- cooperation with 240 Czech experts
- includes an overview of development trends, threats and developmental opportunities of the Czech Republic
- includes three scenarios of future development of the country



# Guide to the Priorities of the Czech Republic

- the second publication (2002)
- cooperation with 176 experts on the identification of priority issues and strategic concepts for development
- basis for the identification of key strategic moves of the Czech society



# Priority Issues and Strategic Concepts for the Czech Republic

- I. Theoretical Starting Points
- II. Methodological Starting Points
- III. Conceptual Model of the Development of the Czech Society and Its Modernization in the Global Context
- IV. Current Economic Situation and Challenges Ahead
- V. Priority Issues
- VI. Strategic Concepts of the Development of the Czech Republic
- VII. Current Projects

# Theoretical Starting Points

- explanation of main ideas of the modernization theory and theory of global development
- traditional, industrial and post-industrial society
- information society and “knowledge society”
- the 2<sup>nd</sup> modernization transformation
- radical critique and reflexive modernization
- theory of sustainable life, open society, globalization concepts and world system theory



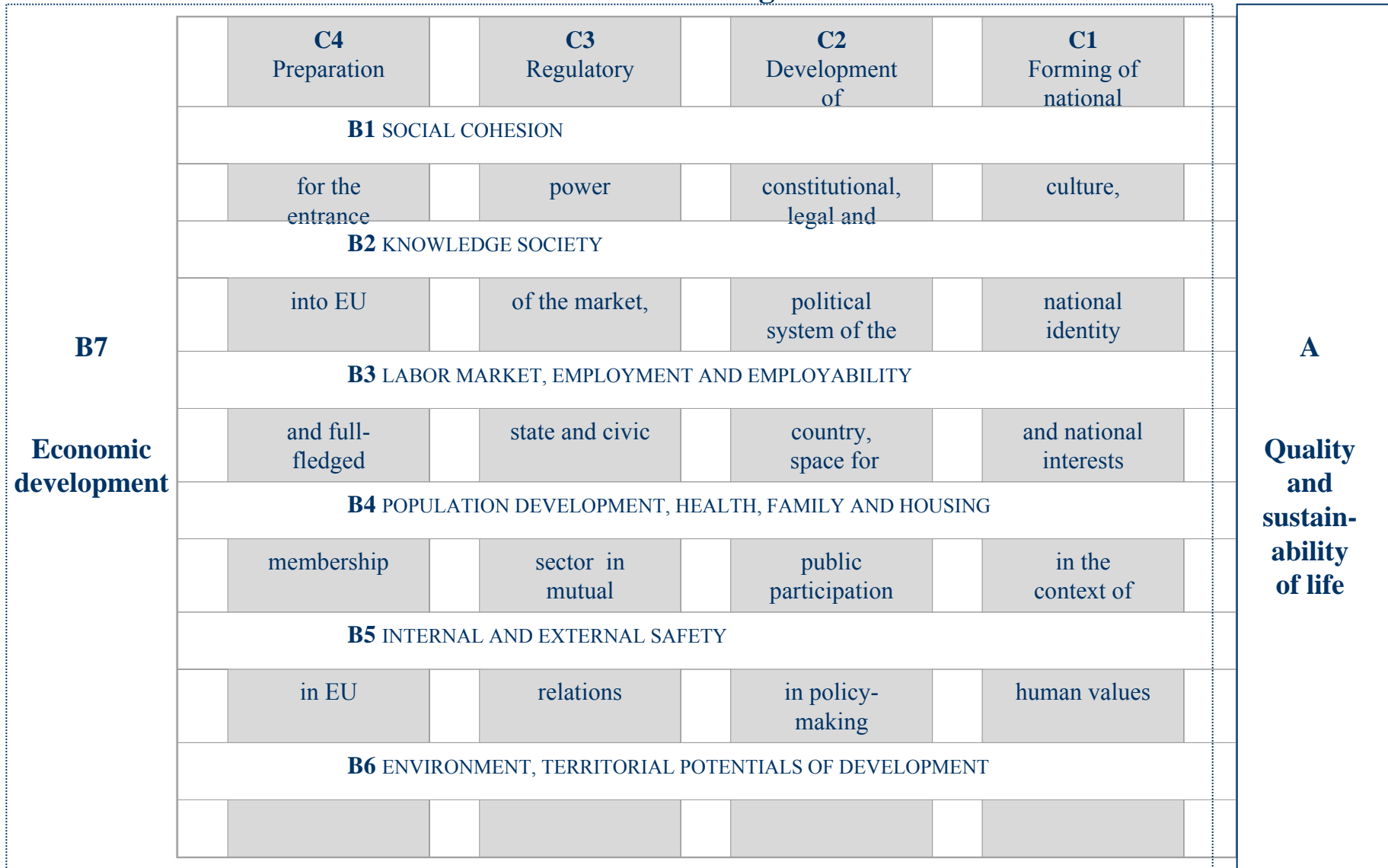
# Methodological Starting Points

- problem-oriented participatory approach
- public discussions
- priority issues
- strategic concepts





# Model of basic connections between the development of the Czech society and its modernization in the global context



**Caption:**

A – Criteria block

B – Developmental potentials

C – Formative regulators



# Macroeconomic Forecast of the Czech Economy

- Fiscal Deficits
- Gross Domestic Product
- Inflation
- State Budget
- Investment



# Convergence of the Economic Level

Indicators	2000	2005	2008
<b>GDP</b>			
per capita in PPP EU = 100	58	62-64	66-69
per worker	100	119-121	136-140
<b>Price Level GDP</b>			
EU = 100	41	53-55	60-65
Index year 2000 = 100	100	123	139-142
<b>Consumer Price Index</b>			
Index year 2000 = 100	100	122-123	139-142
<b>Average Real Wage (gross)</b>			
Index year 2000 = 100	100	118-119	130-134



# Priority Issues

- the discrepancy between the present and desirable states of certain conditions of life in a society
- the solution which makes way for solving other problems
- 77 priority issues identified



# Strategic Concepts of the Development of the CR

- solutions for whole groups of priority issues
- proposals of strategies, including their aims, approaches, time horizons and a description of tools and actors involved in their realization
- 30 strategic concepts identified



# Current Projects

- Strategic Moves in the Development of Czech Republic
- Empirical Research of Life Strategies and Ambitions of Czech Population
- Regional Aspects of Quality and Sustainability of Life
- Vision of the Development of Czech Republic until 2020
- National Human Development Report for the Czech Republic 2002



# More Information

CESES UK FSV

Celetna 20

116 36 Prague 1

Czech Republic

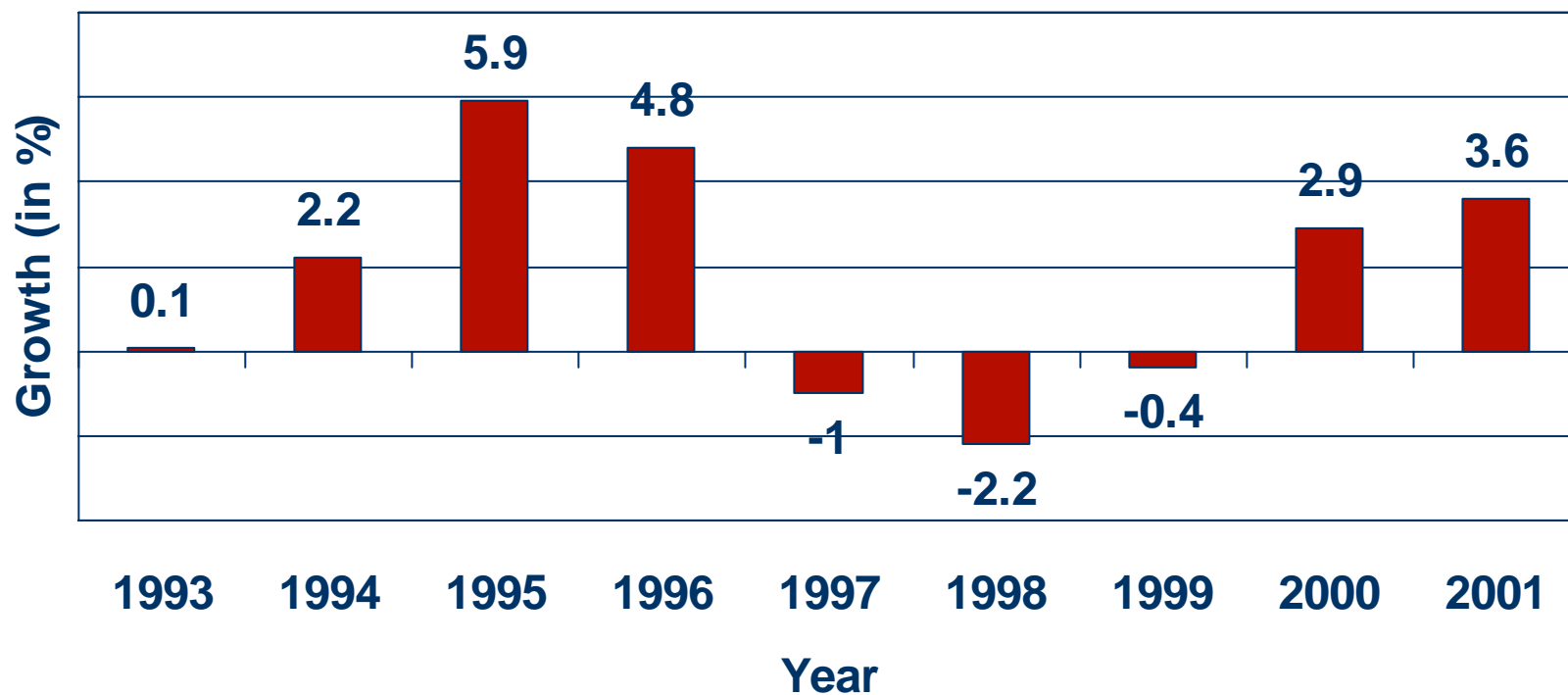
phone: +4202-24491493; fax: +4202-24227950

e-mail: [ceses@mbox.fsv.cuni.cz](mailto:ceses@mbox.fsv.cuni.cz)

www: <http://vize-cr.fsv.cuni.cz>

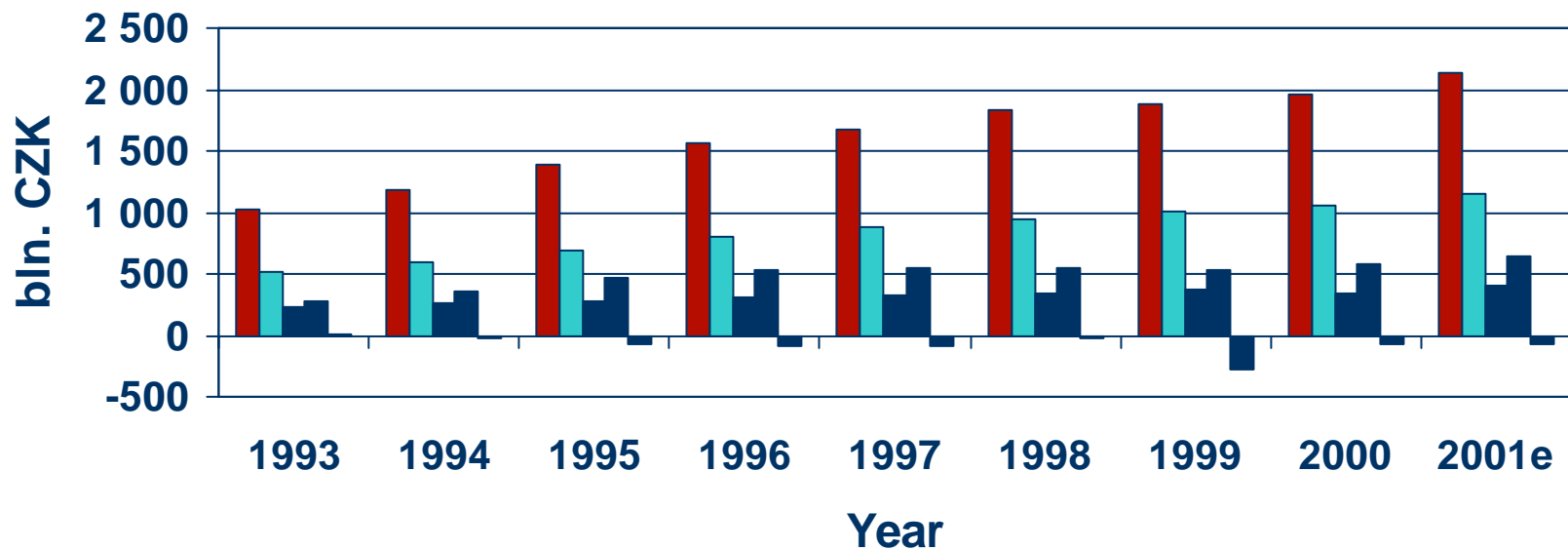


# The Annual Growth Rates of Real GDP (in %)

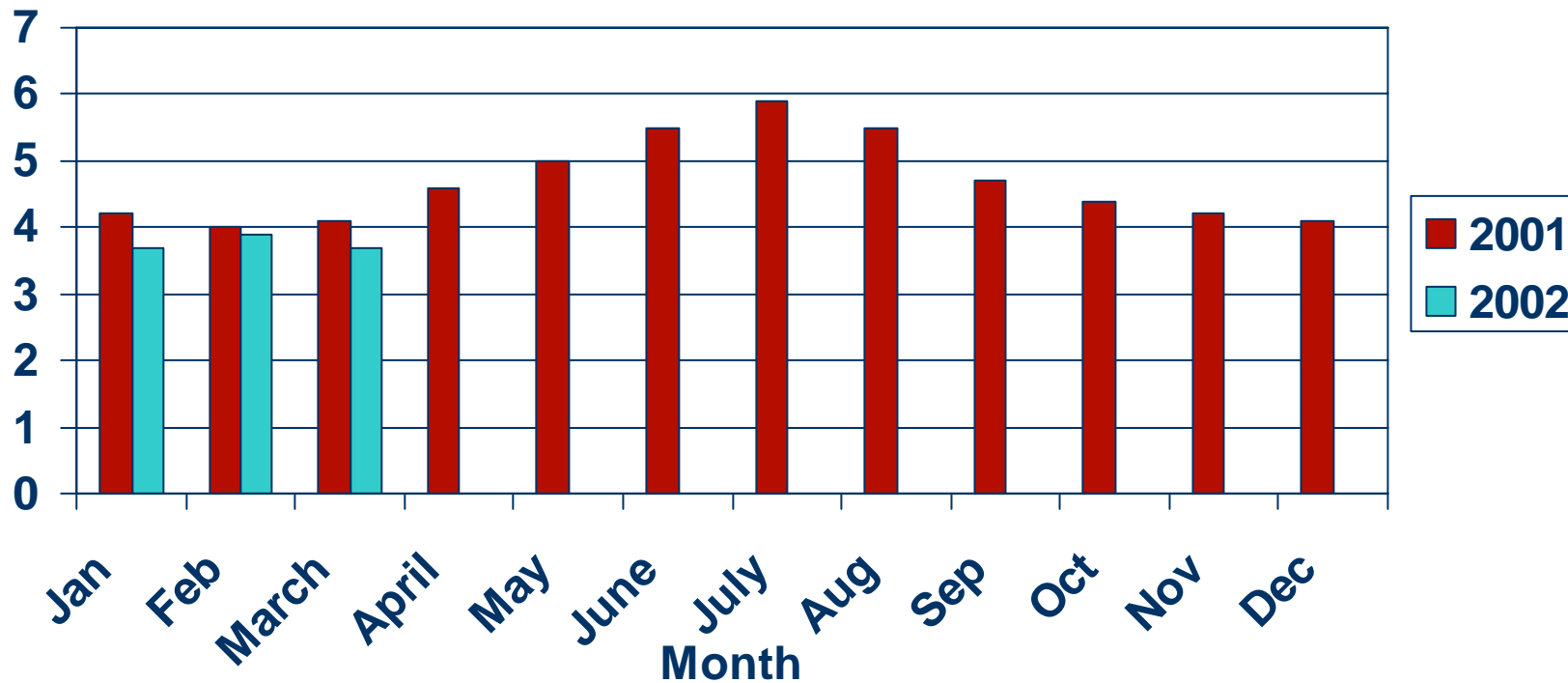




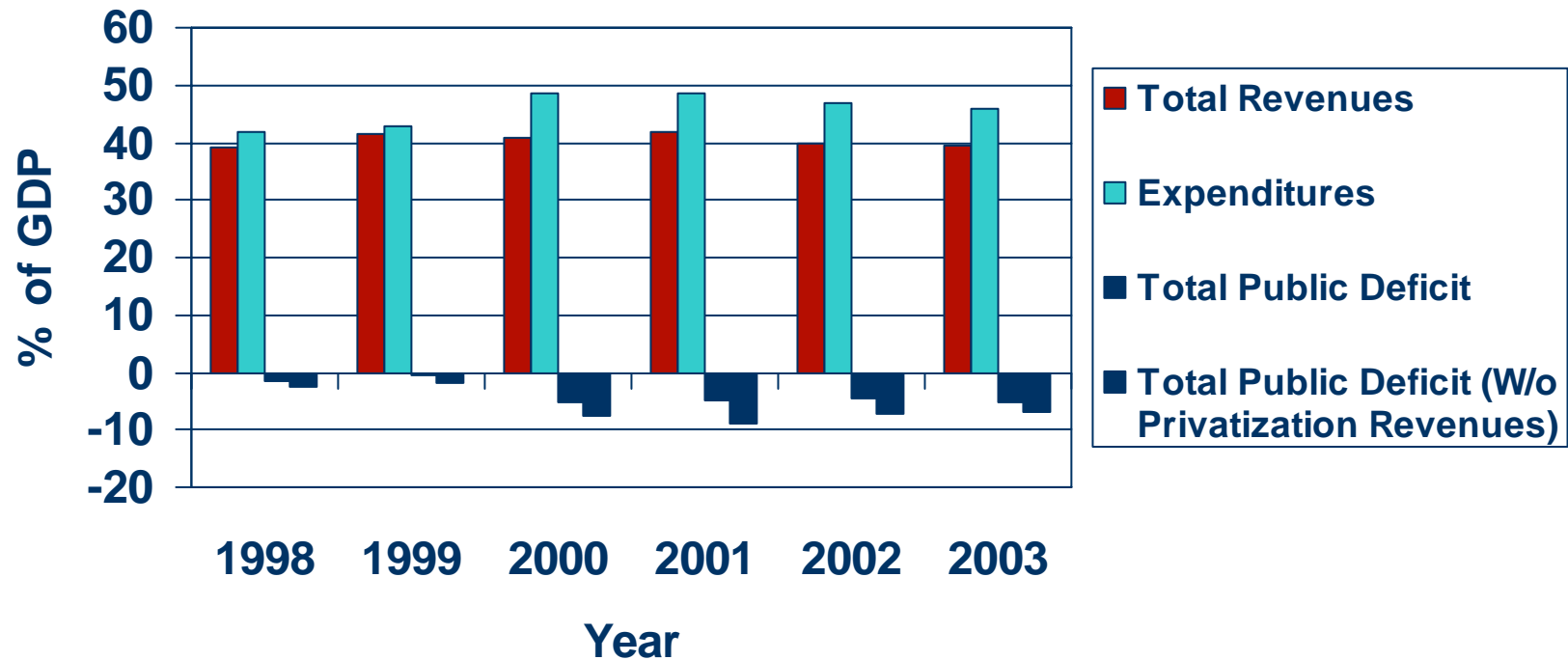
# The Breakdown of Nominal GDP Into the Aggregate Demand



# Inflation Rate (in %)



# Medium Term Fiscal Outlook (Passive Scenario)



# The Ratio of Gross Fixed Capital Formation to GDP (in %)

